



KEY

1 AIM HIGH IN STEERING.



A 15 SECOND EYE LEAD TIME PROVIDES ADVANCED WARNING



ACCURATE DECISIONS CANNOT BE MADE WITHOUT ADEQUATE INFORMATION AND TIME

The Smith 5Keys™



**K
E
Y** **2** **GET THE
BIG PICTURE.**



SCAN MIRRORS EVERY 5 TO 8 SECONDS



**MINIMUM 4 SECONDS FOLLOWING
DISTANCE TO MAXIMIZE VISIBILITY**



**K
E
Y** **3** **KEEP YOUR
EYES MOVING.**



KEEP YOUR EYES MOVING
AT LEAST EVERY 2 SECONDS



AVOID A FIXED STARE



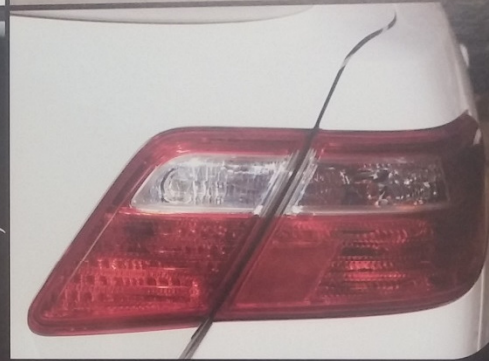
KEY **4** **LEAVE YOURSELF AN OUT.**



SURROUND YOURSELF WITH SPACE



A SPACE CUSHION INCREASES YOUR TIME TO DEAL WITH THE UNEXPECTED



KEY **5** MAKE SURE
THEY SEE YOU[®]



ESTABLISH EYE CONTACT



WHEN IN DOUBT USE YOUR HORN, LIGHTS
AND TURN SIGNALS TO COMMUNICATE