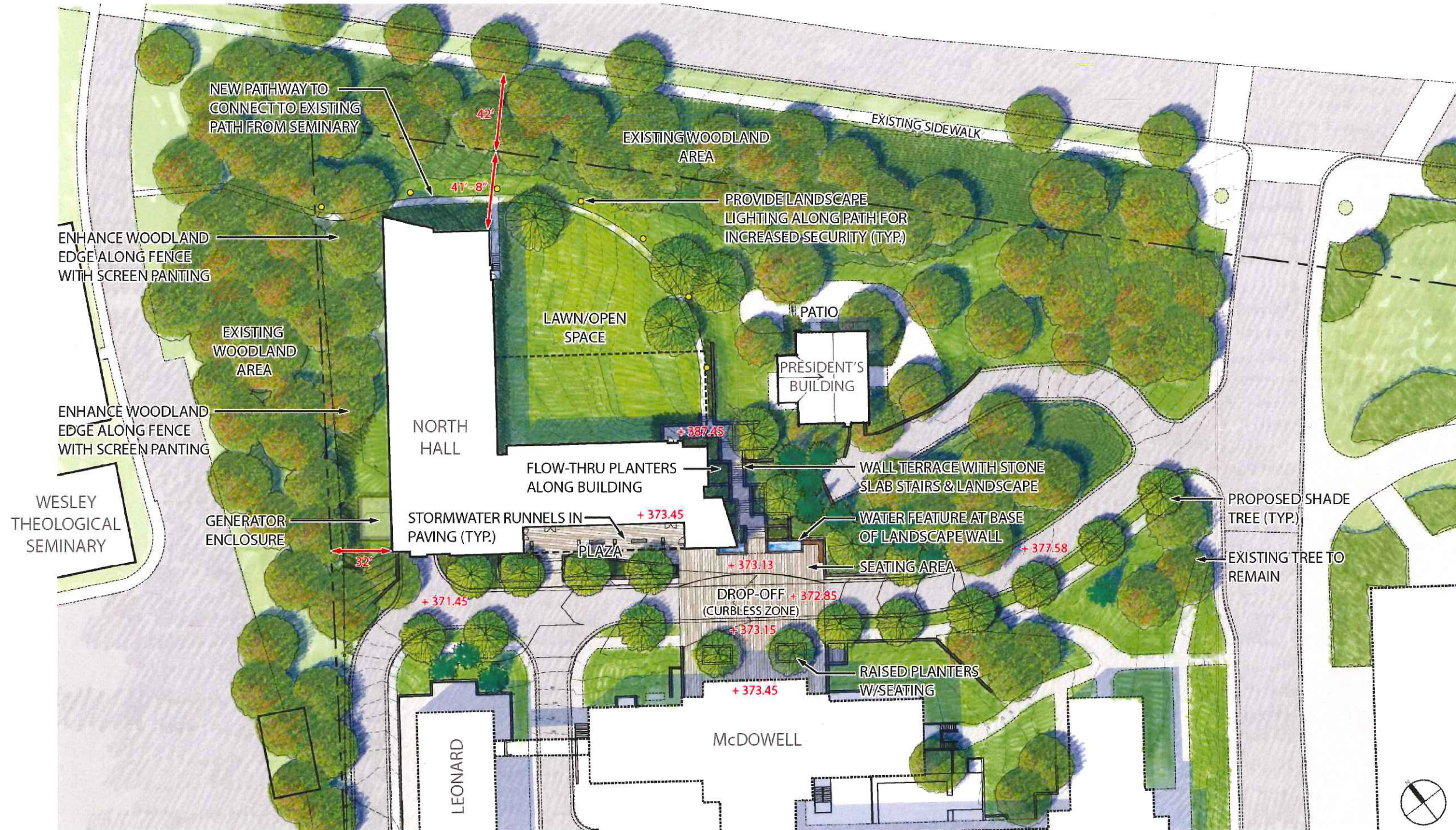
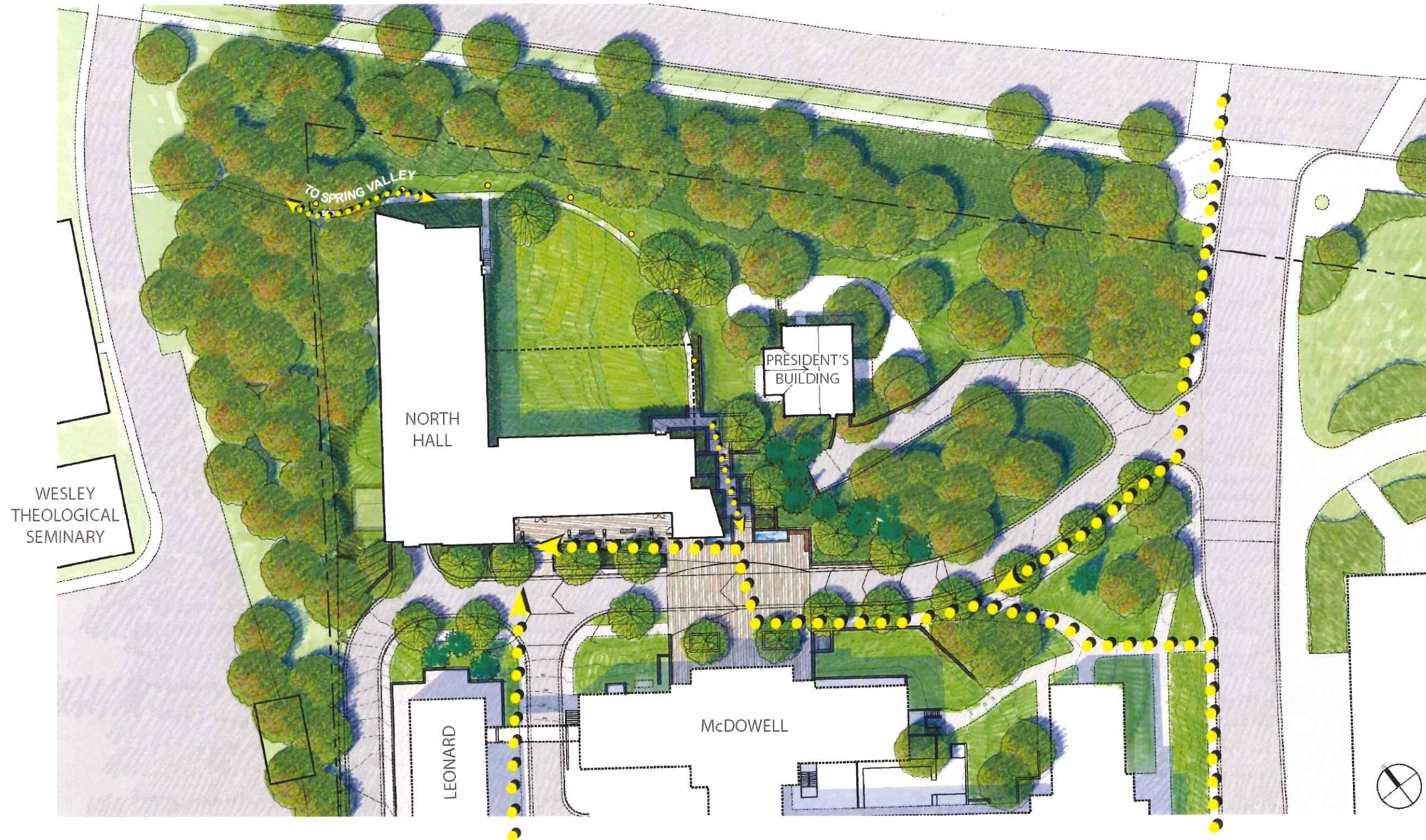




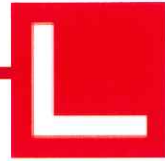
## North Hall – Site Plan – October 6, 2011



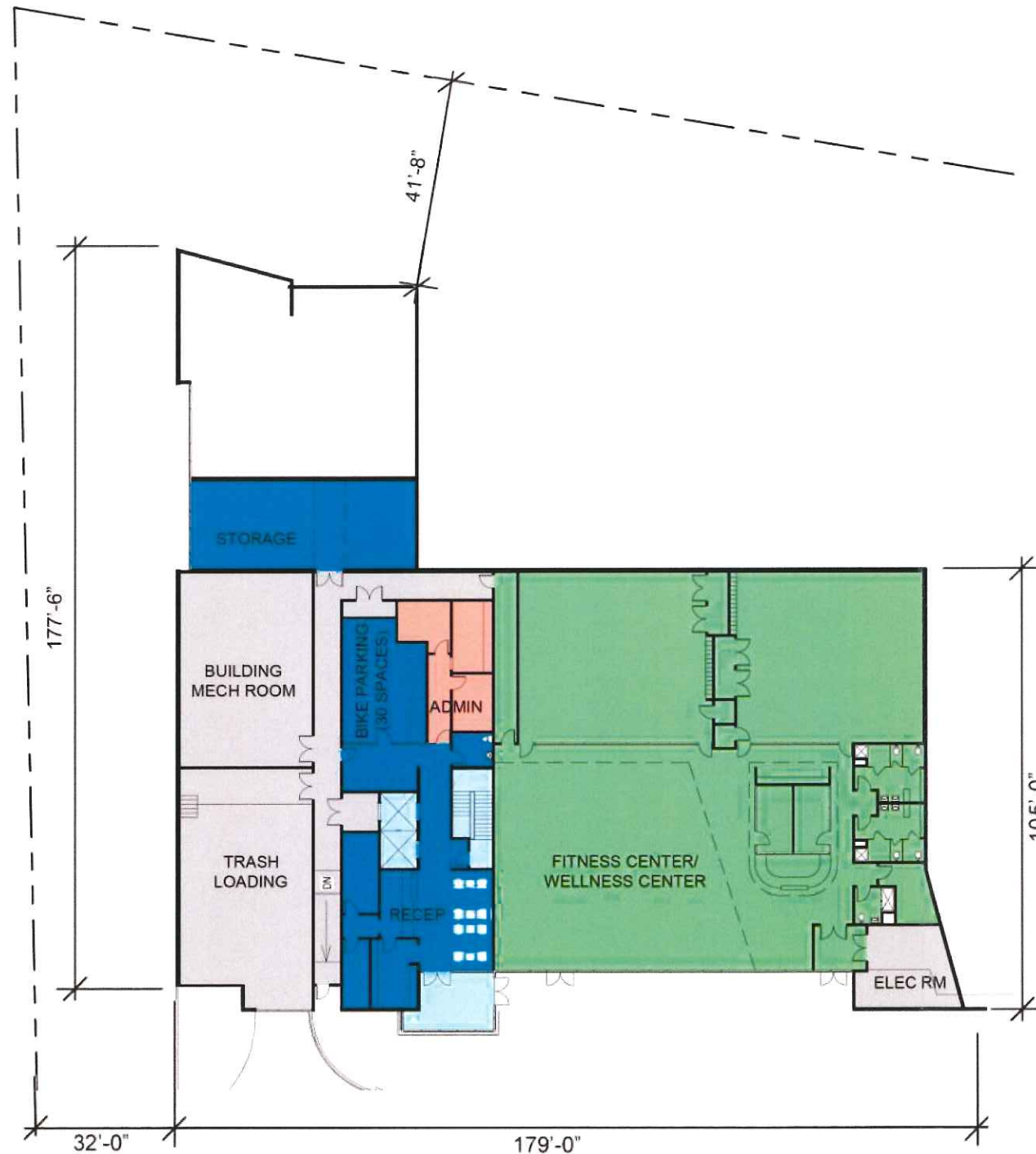








## North Hall – Ground Floor Plan – October 6, 2011



### GROUND FLOOR

8,700 SF - PROGRAM SPACE  
 4,110 SF - SUPPORT  
 3,475 SF - SHARED SPACES/ RESIDENCE HALL  
 480 SF - RESIDENTIAL LIFE SUPPORT  
 935 SF - LOBBY/ CIRCULATION  
**17,700 GSF - GROUND FLOOR**

### RESIDENTIAL FLOORS

**16,700 GSF - FLOORS 2-7**  
**9,600 GSF - FLOOR 8**

### 126,500 GSF - TOTAL BUILDING

#### 358 BEDS TOTAL

244 (TYPE A @ 755 SF)  
 12 (TYPE B @ 300 SF)  
 102 (TYPE C @ 1,045 SF)

307 SF/BED

#### 2

TYPE A UNITS - 36 STUDENT BEDS (9 UNITS)  
 TYPE B UNITS - 1 STUDENT BED (1 UNIT)  
 TYPE C UNITS - 12 STUDENTS (2 UNITS)  
 FACULTY UNIT (1 UNIT)

#### 3 - 7

TYPE A UNITS - 36 STUDENT BEDS (9 UNITS)  
 TYPE B UNITS - 2 STUDENT BEDS (2 UNITS)  
 TYPE C UNITS - 18 STUDENTS (3 UNITS)

#### 8

TYPE A UNITS - 28 STUDENT BEDS (7 UNITS)  
 TYPE B UNITS - 1 STUDENT BED (1 UNIT)

- LOBBY / CIRCULATION
- PROGRAM SPACE
- RESIDENTIAL LIFE SUPPORT
- SHARED SPACES - RESIDENCE HALL
- SUPPORT





## North Hall – Typical Floor Plan – October 6, 2011



### GROUND FLOOR

- 8,700 SF - PROGRAM SPACE
- 4,110 SF - SUPPORT
- 3,475 SF - SHARED SPACES/ RESIDENCE HALL
- 480 SF - RESIDENTIAL LIFE SUPPORT
- 935 SF - LOBBY/ CIRCULATION
- 17,700 GSF - GROUND FLOOR**

### RESIDENTIAL FLOORS

- 16,700 GSF - FLOORS 2-7**
- 9,600 GSF - FLOOR 8**

**126,500 GSF - TOTAL BUILDING**

### 358 BEDS TOTAL

- 244 (TYPE A @ 755 SF)
- 12 (TYPE B @ 300 SF)
- 102 (TYPE C @ 1,045 SF)

**307 SF/BED**

### 2

- TYPE A UNITS - 36 STUDENT BEDS (9 UNITS)
- TYPE B UNITS - 1 STUDENT BED (1 UNIT)
- TYPE C UNITS - 12 STUDENTS (2 UNITS)
- FACULTY UNIT (1 UNIT)

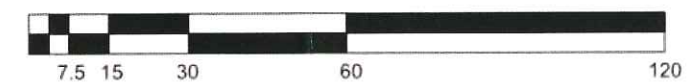
### 3 - 7

- TYPE A UNITS - 36 STUDENT BEDS (9 UNITS)
- TYPE B UNITS - 2 STUDENT BEDS (2 UNITS)
- TYPE C UNITS - 18 STUDENTS (3 UNITS)

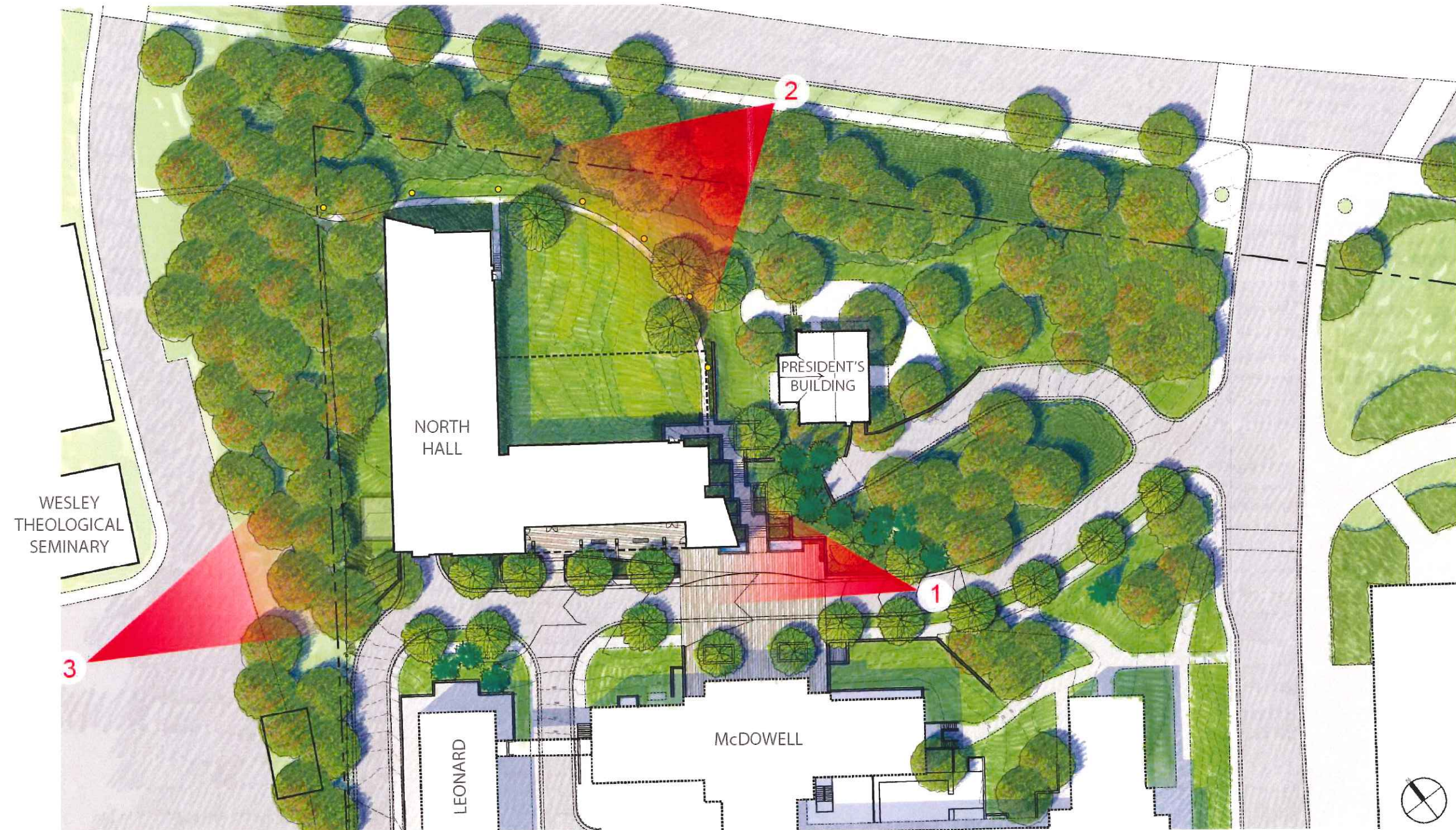
### 8

- TYPE A UNITS - 28 STUDENT BEDS (7 UNITS)
- TYPE B UNITS - 1 STUDENT BED (1 UNIT)

- LOBBY / CIRCULATION
- SHARED SPACES - RESIDENCE HALL
- SUPPORT
- UNIT TYPE A
- UNIT TYPE B
- UNIT TYPE C





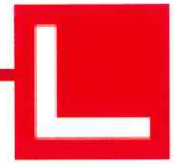




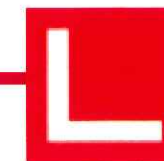


AMERICAN UNIVERSITY

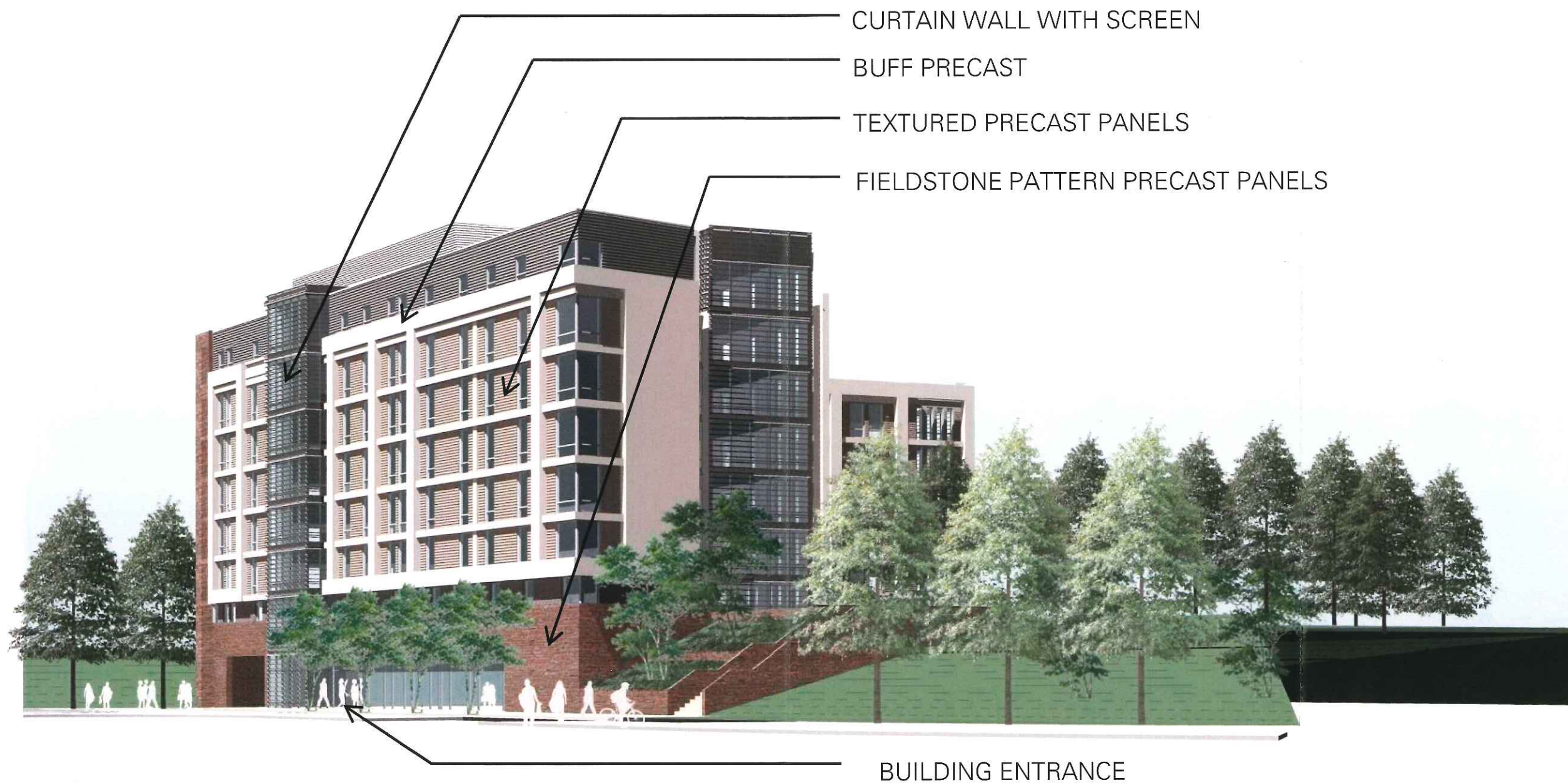
North Hall – Perspective View 1 – from McDowell







## North Hall – Perspective View 1 – from McDowell







AMERICAN UNIVERSITY

North Hall – Perspective View 2 – from Mass. Ave.







AMERICAN UNIVERSITY

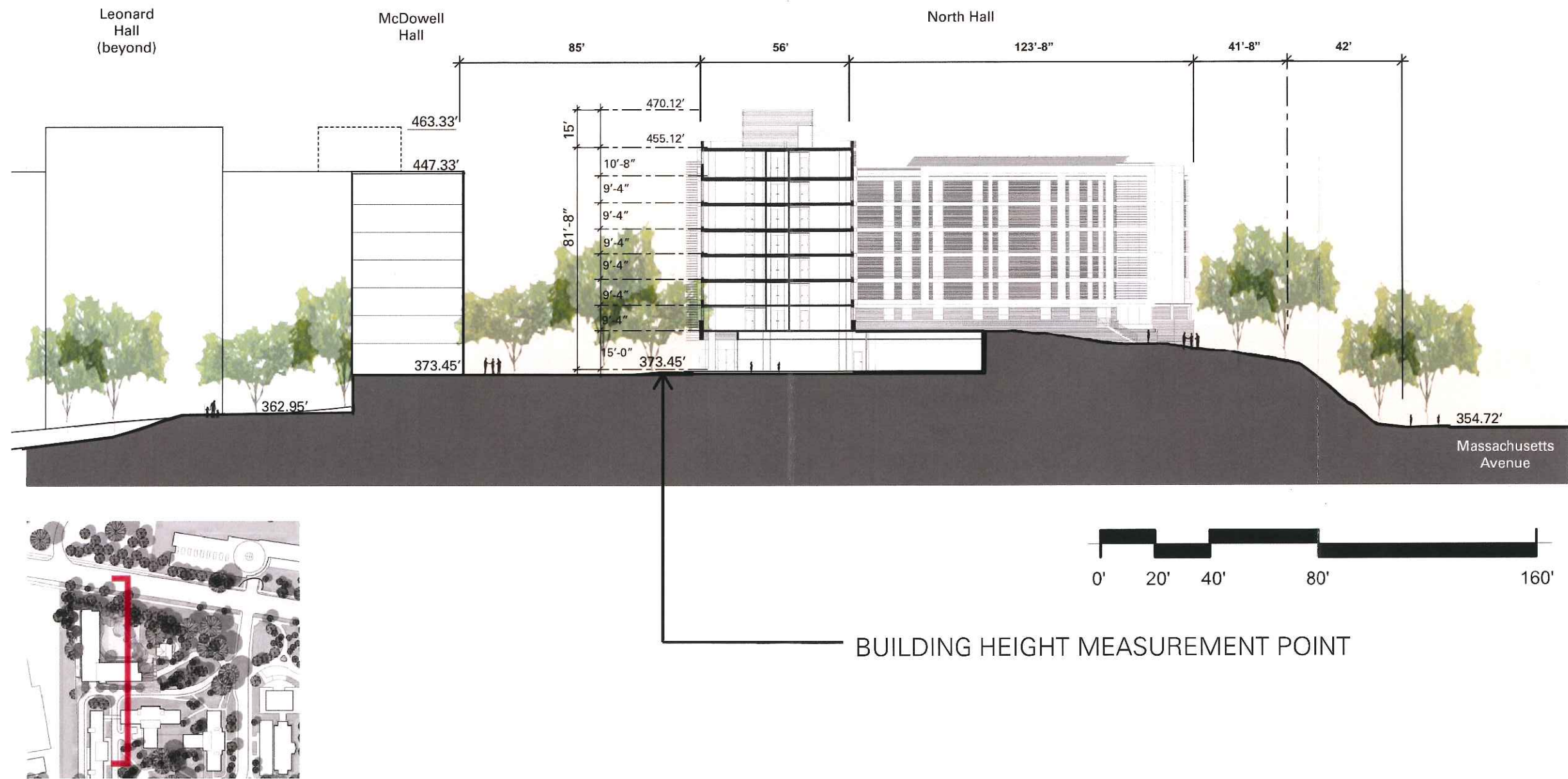
North Hall – Perspective View 3 – from Wesley Seminary



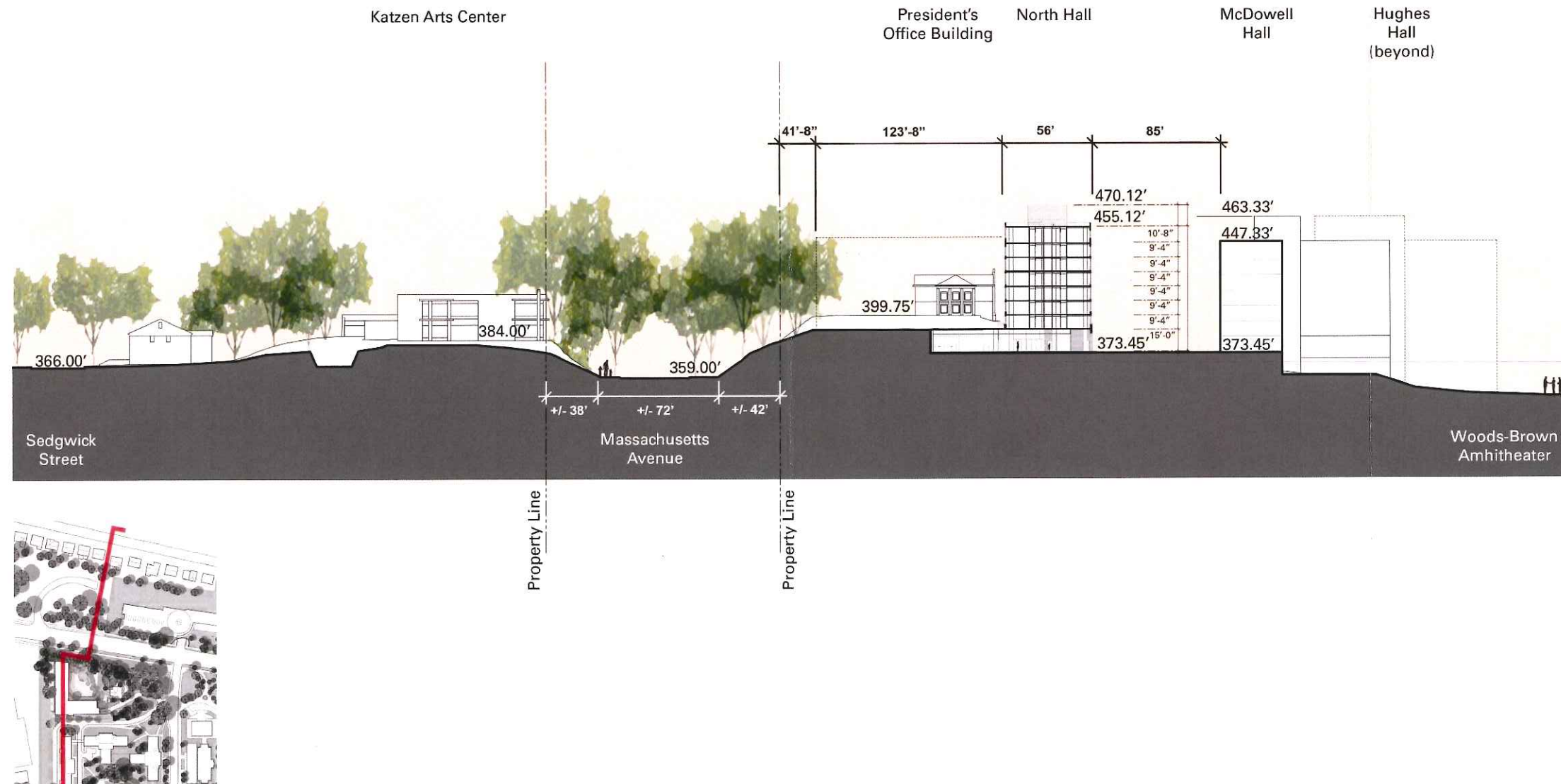
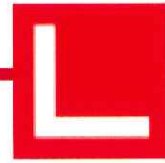




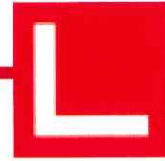
## North Hall – Site Section – October 6, 2011



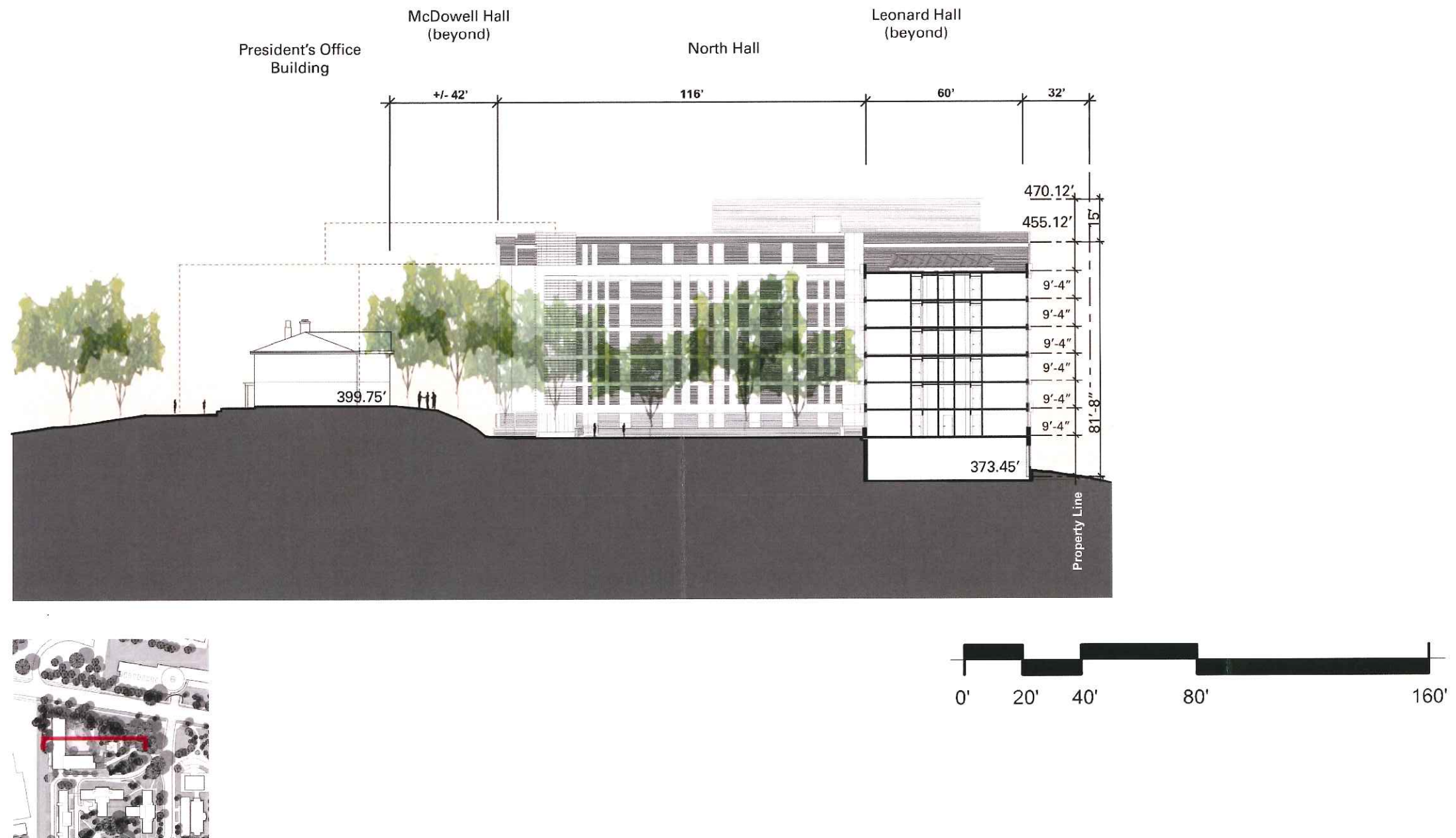




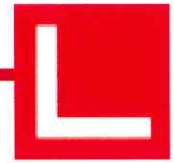




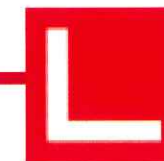
## North Hall – Site Section – October 6, 2011



















# AMERICAN UNIVERSITY

## North Hall – Existing View From 45<sup>th</sup> Street







AMERICAN UNIVERSITY

North Hall – Massing View From 45<sup>th</sup> Street







# AMERICAN UNIVERSITY

## North Hall – Outline View From 45<sup>th</sup> Street





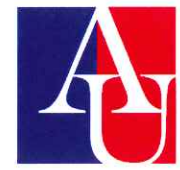


AMERICAN UNIVERSITY

North Hall – Existing View From Wesley Seminary

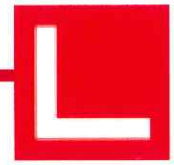




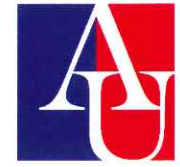


AMERICAN UNIVERSITY

North Hall – Massing View From Wesley Seminary







AMERICAN UNIVERSITY

North Hall – Outline View From Wesley Seminary

