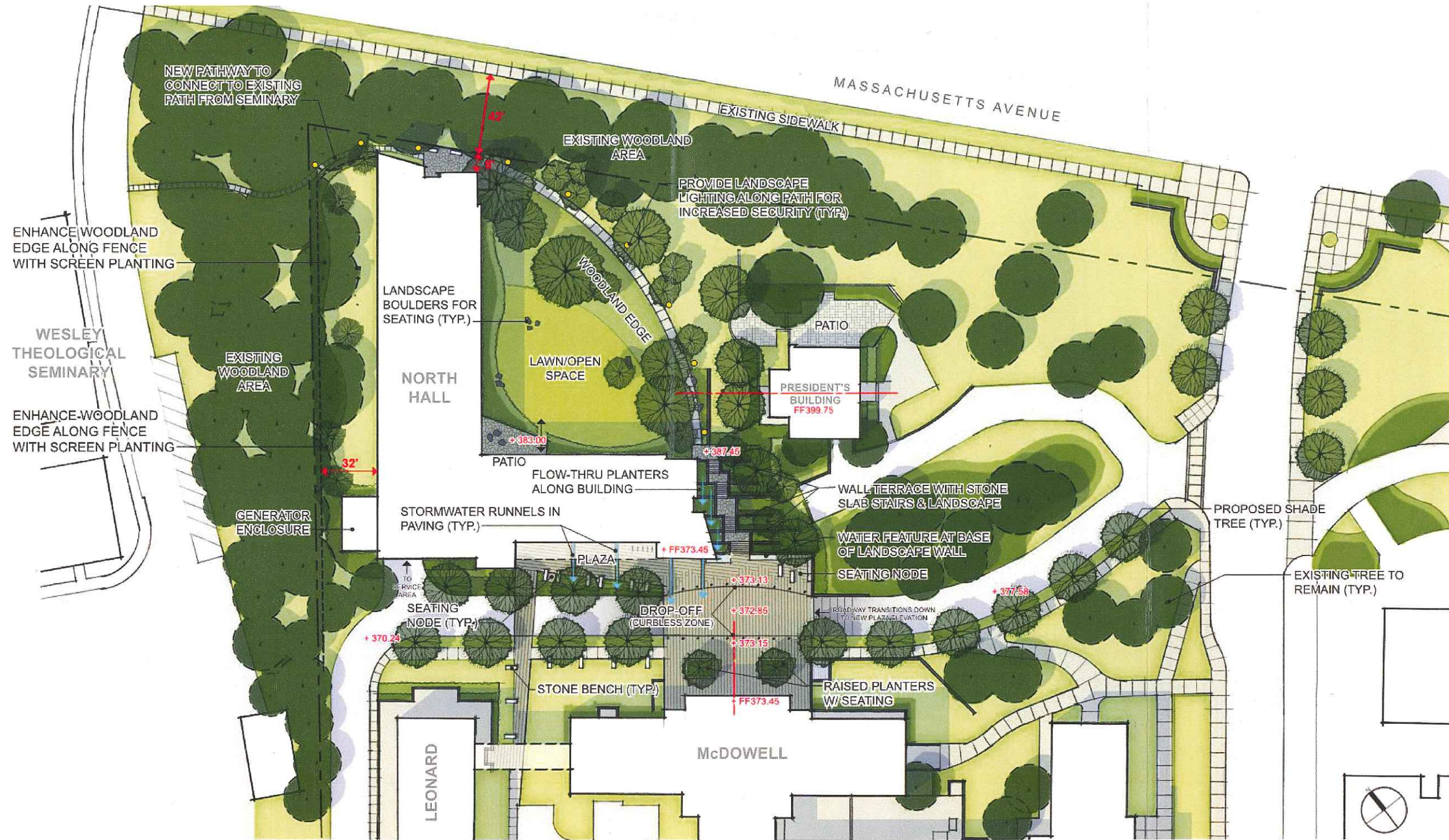
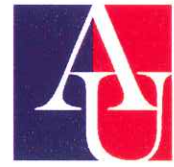




## North Hall – Site Plan – July 18, 2011











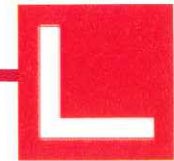




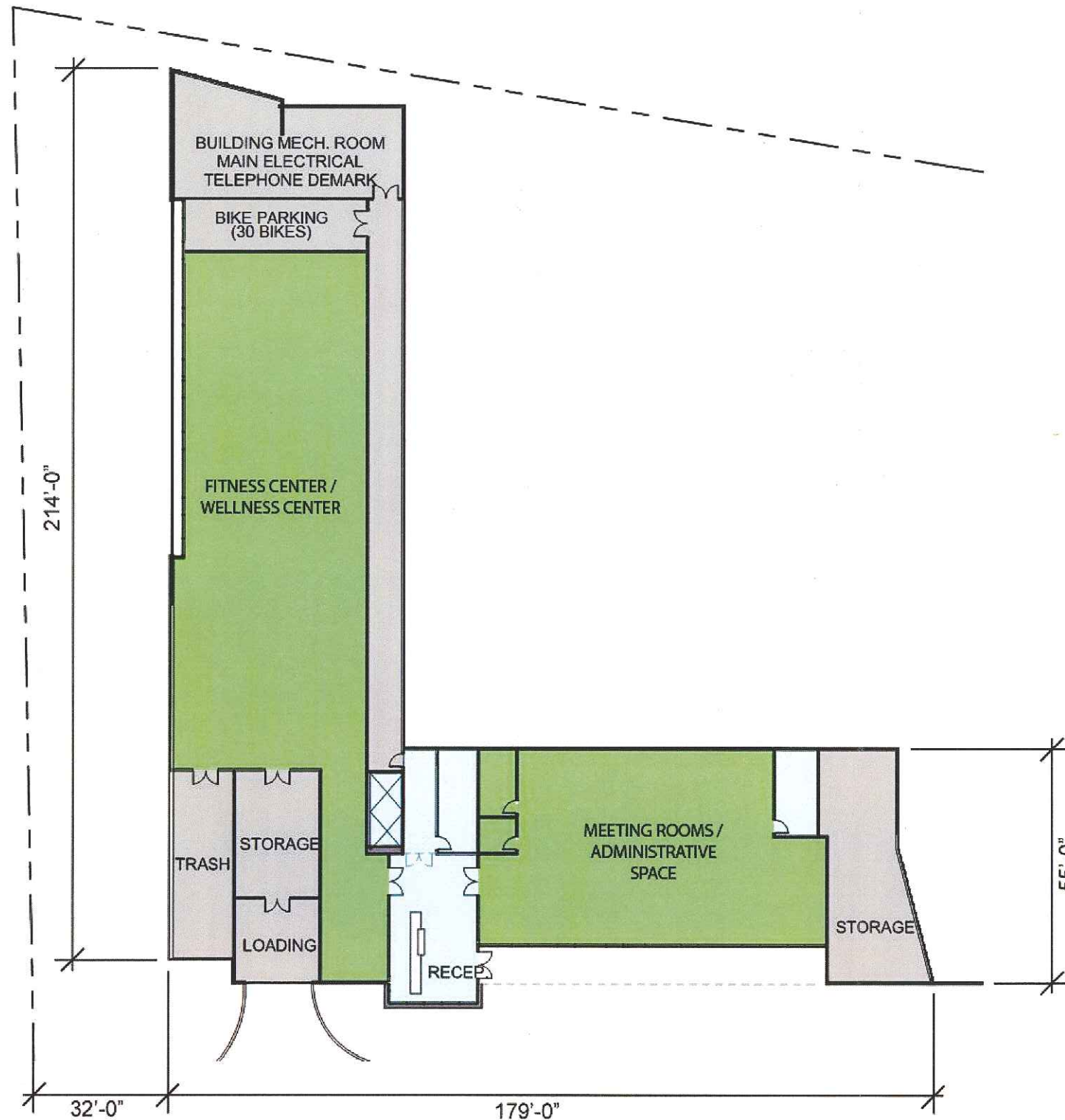
AMERICAN UNIVERSITY

Photo D. McDowell Hall





## North Hall – Ground Floor Plan – July 18, 2011



### SHARED SPACES

9,750 SF - PROGRAM SPACE  
 4,900 SF - SUPPORT

### RESIDENCE HALL

1,000 SF - LOWER LEVEL LOBBY  
 18,200 GSF - RESIDENTIAL UNITS (2-7)

**109,200 GSF TOTAL RESIDENTIAL (2-7)**  
**18,200 GSF GROUND FLOOR (1)**

**354 BEDS (INCLUDES RA BED)**  
 332 (TYPE A)  
 22 (TYPE B)

**295 SF/BED**

### 2

TYPE A UNITS - 52 STUDENT BEDS (13 UNITS)  
 RA UNIT - 2 BEDS (1 UNIT)  
 FACULTY UNIT (1 UNIT)

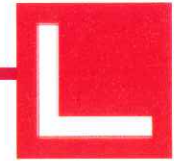
### 3 - 7

TYPE A UNITS - 56 STUDENT BEDS (14 UNITS)  
 TYPE B UNIT - 2 STUDENT BEDS (1 UNIT)  
 RA UNIT - 2 BEDS (1 UNIT)

- LOBBY / CIRCULATION
- PROGRAM SPACE
- SUPPORT







### SHARED SPACES

9,750 SF - PROGRAM SPACE  
 4,900 SF - SUPPORT

### RESIDENCE HALL

1,000 SF - LOWER LEVEL LOBBY  
 18,200 GSF - RESIDENTIAL UNITS (2-7)

109,200 GSF TOTAL RESIDENTIAL (2-7)  
 18,200 GSF GROUND FLOOR (1)

354 BEDS (INCLUDES RA BED)  
 332 (TYPE A)  
 22 (TYPE B)

295 SF/BED

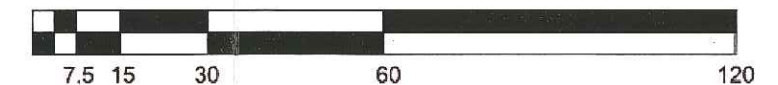
2

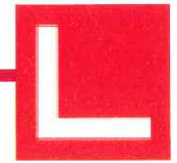
TYPE A UNITS - 52 STUDENT BEDS (13 UNITS)  
 RA UNIT - 2 BEDS (1 UNIT)  
 FACULTY UNIT (1 UNIT)

3 - 7

TYPE A UNITS - 56 STUDENT BEDS (14 UNITS)  
 TYPE B UNIT - 2 STUDENT BEDS (1 UNIT)  
 RA UNIT - 2 BEDS (1 UNIT)

- LOBBY / CIRCULATION
- SHARED SPACES - RESIDENCE HALL
- SUPPORT
- UNIT TYPE A
- UNIT TYPE B





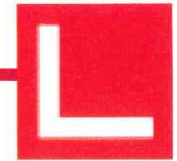
## North Hall - Perspective View Key Plan





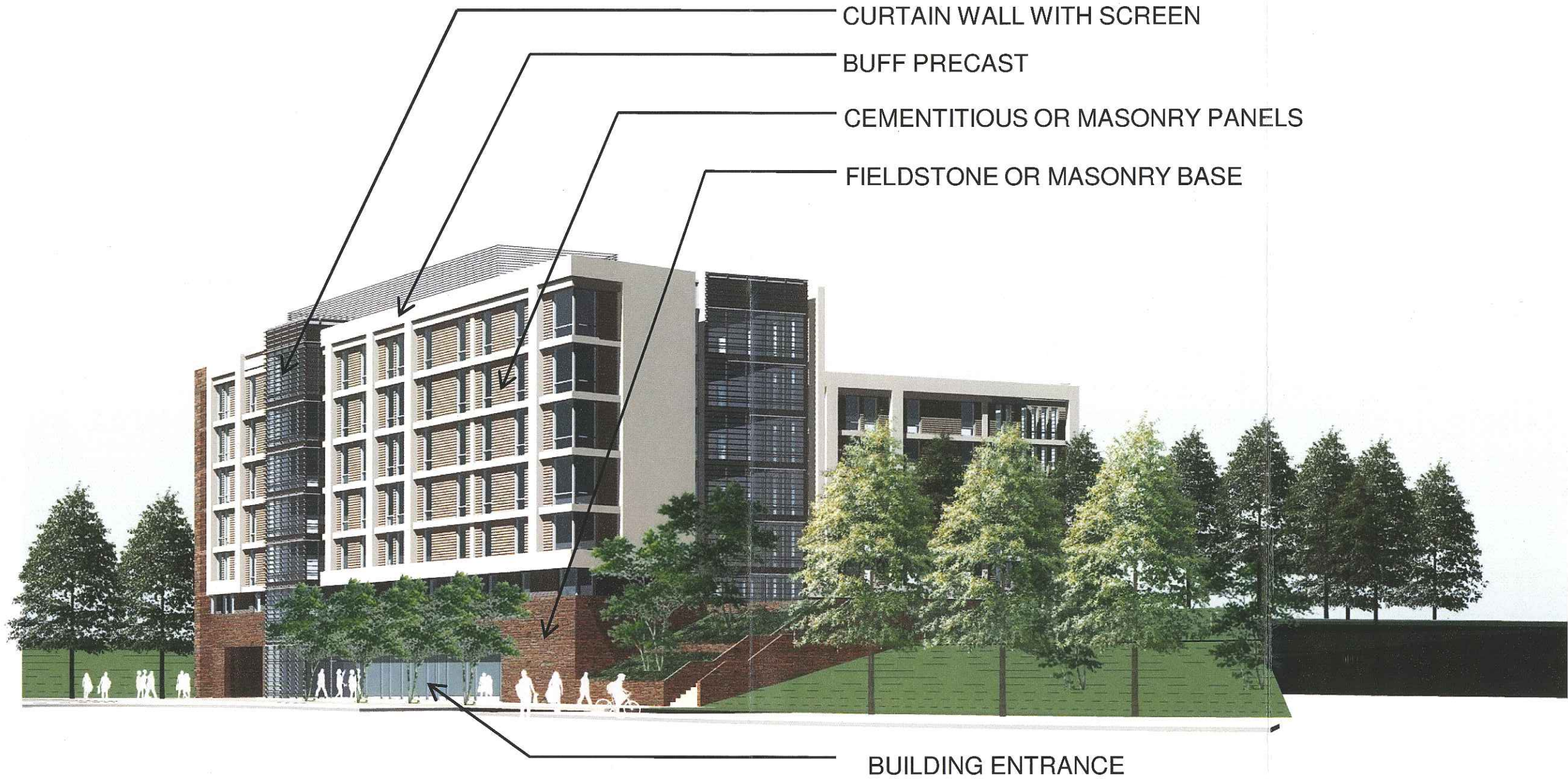
AMERICAN UNIVERSITY

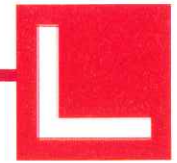
North Hall – Perspective View 1 – from McDowell





## North Hall – Perspective View 1 – from McDowell







AMERICAN UNIVERSITY

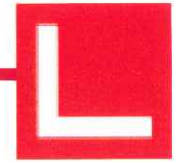
North Hall – Perspective View 2 – from Mass. Ave.





AMERICAN UNIVERSITY

North Hall – Perspective View 2 – from Mass. Ave.





AMERICAN UNIVERSITY

North Hall – Perspective View 3 – from Wesley Seminary







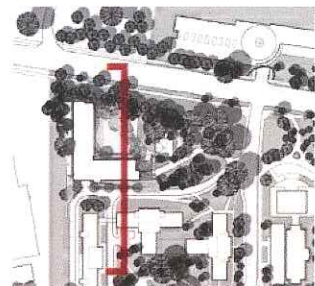
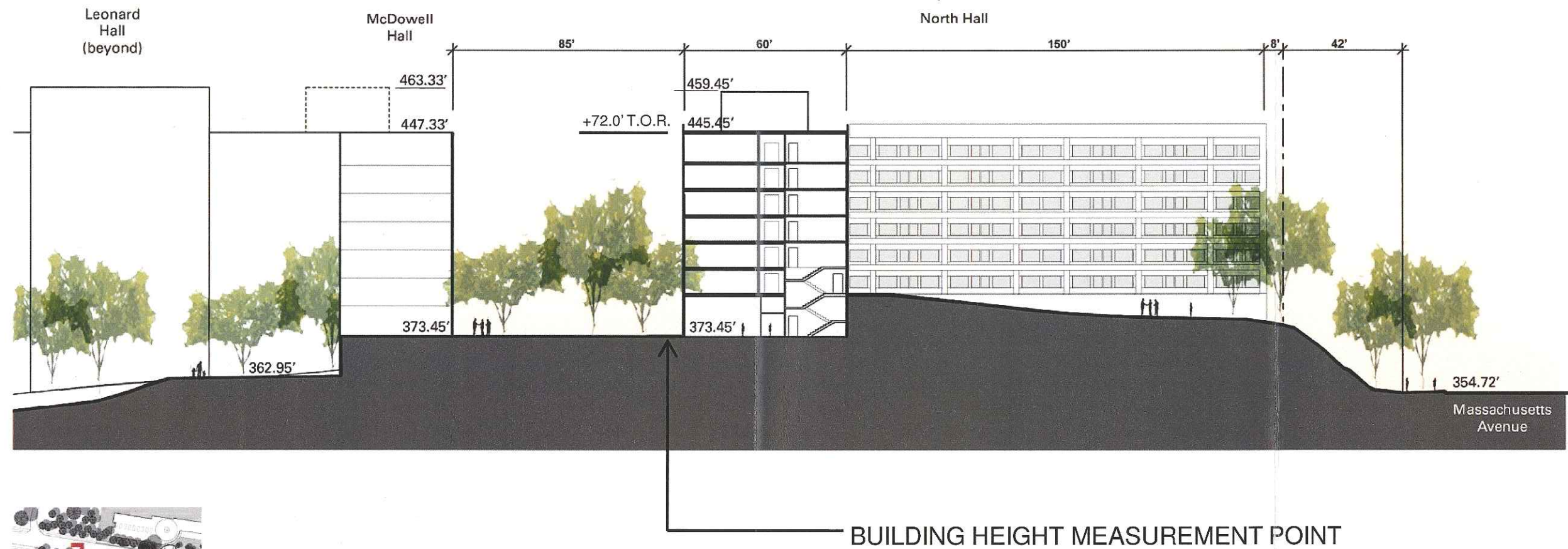
AMERICAN UNIVERSITY

North Hall – Perspective View 3 – from Wesley Seminary



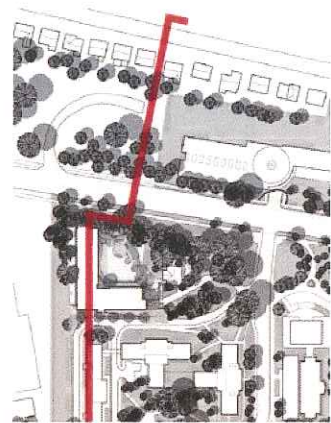
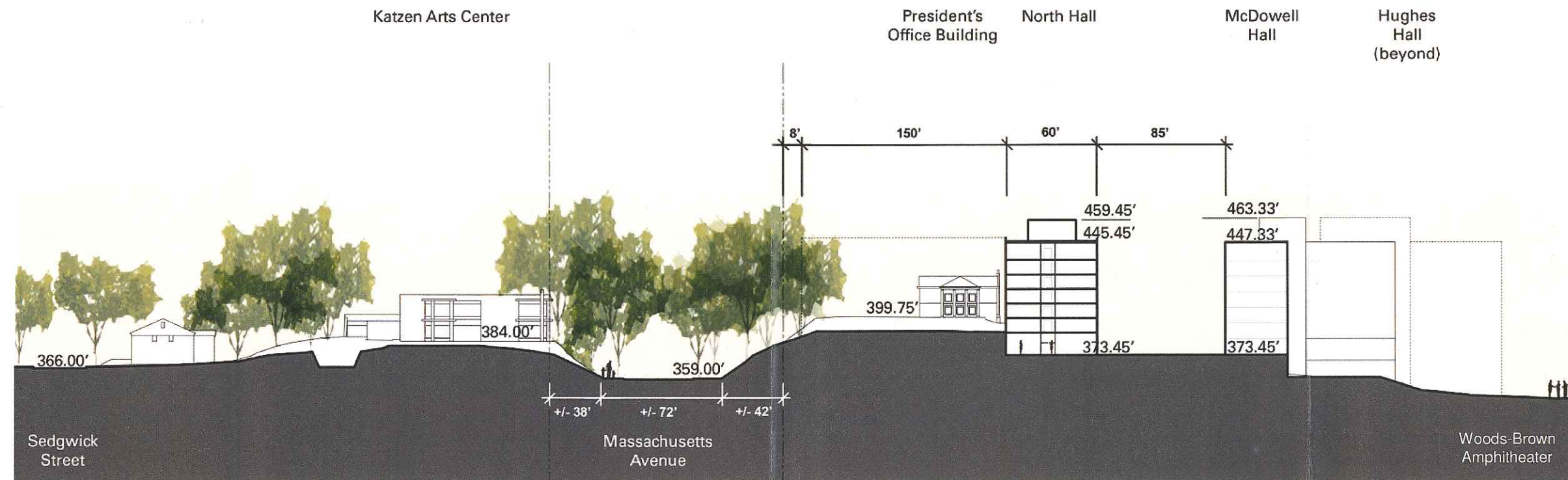


## North Hall – Site Section – July 18, 2011



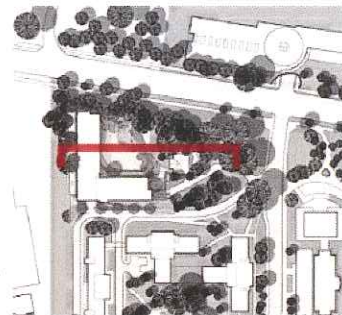
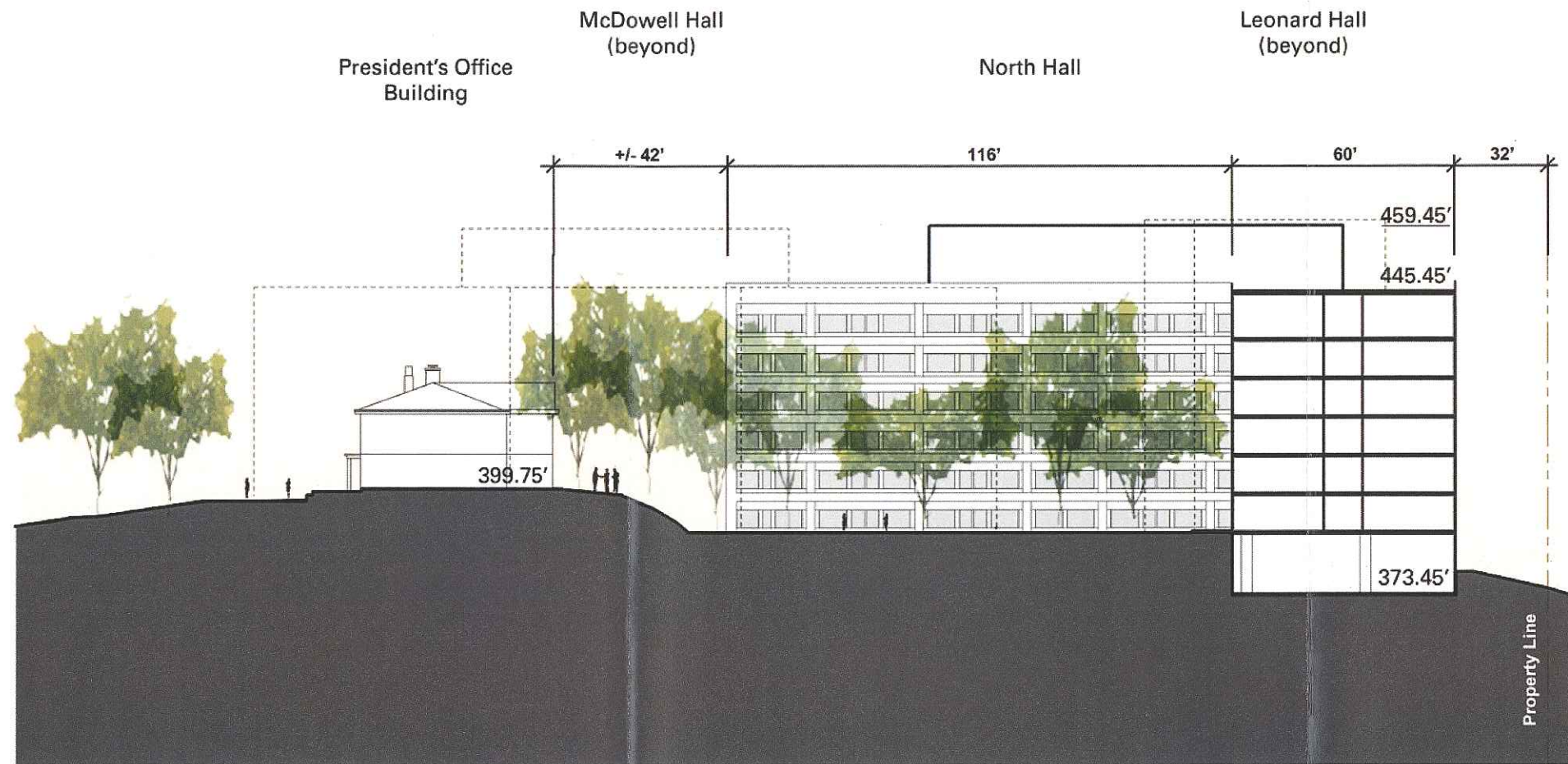


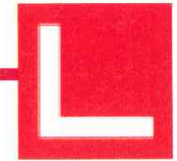
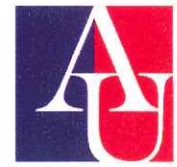
## North Hall – Site Section – July 18, 2011



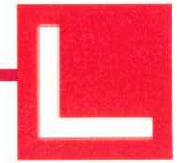


## North Hall – Site Section – July 18, 2011







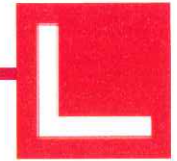




## North Hall – Existing View From 45<sup>th</sup> Street







## North Hall – Massing View From 45<sup>th</sup> Street





## North Hall – Outline View From 45<sup>th</sup> Street





AMERICAN UNIVERSITY

North Hall – Existing View From Wesley Seminary



