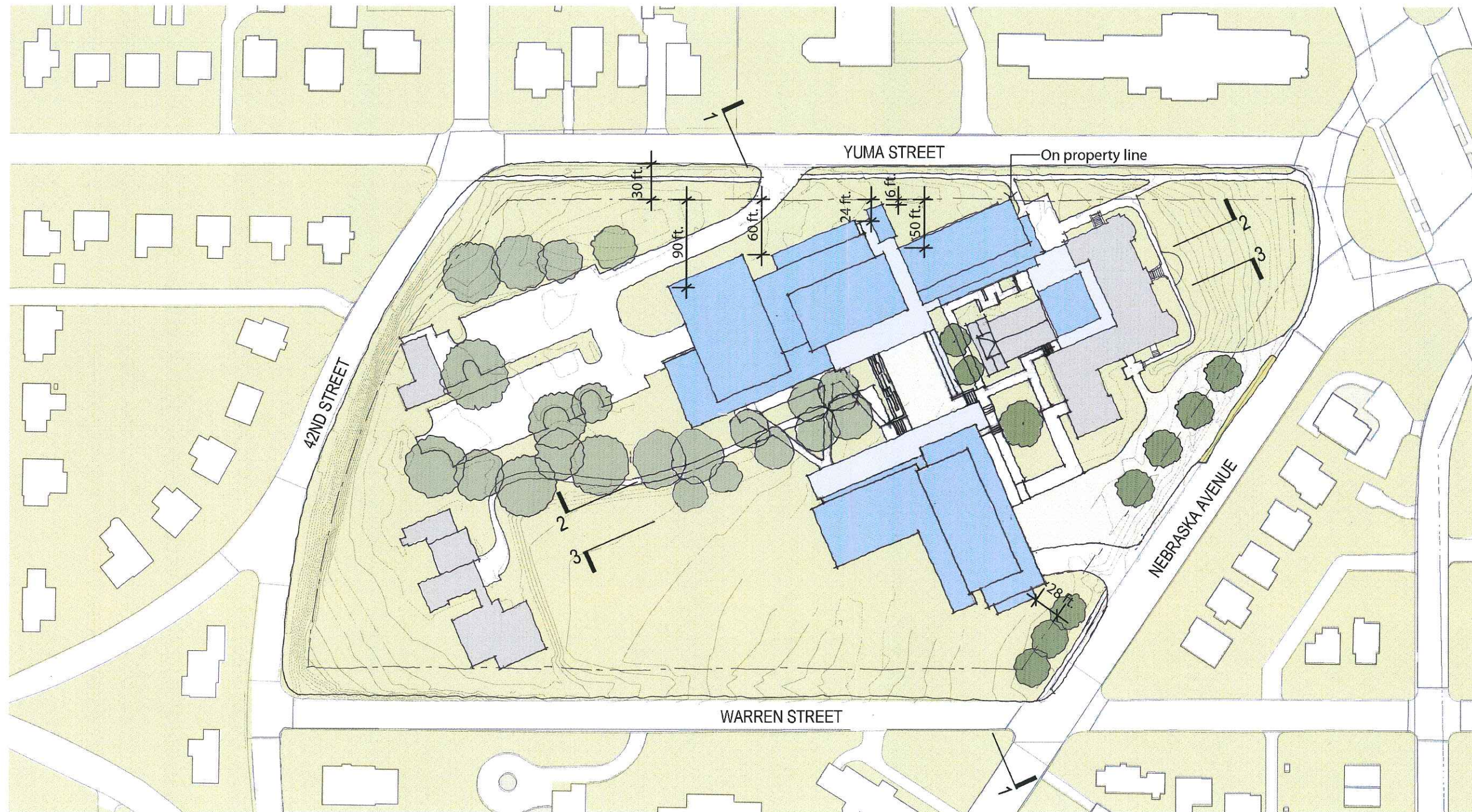


SITE PLAN



EXISTING
 PROPOSED



American University
4400 Massachusetts Avenue, NW
Washington, DC 20016-6200

AMERICAN UNIVERSITY
Tenley Campus- Proposed
Washington College of Law

SMITHGROUP
architecture engineering interiors planning
SMITHGROUP, INC.
1850 K STREET NW
SUITE 250
WASHINGTON, DC 20006
T 202.842.2100
F 202.974.4500
www.smithgroup.com



PROJECT NORTH

SITE PLAN

DRAWING TITLE

June 23, 2011

DATE

N.T.S

SCALE

PROJECT NUMBER

DRAWING NUMBER

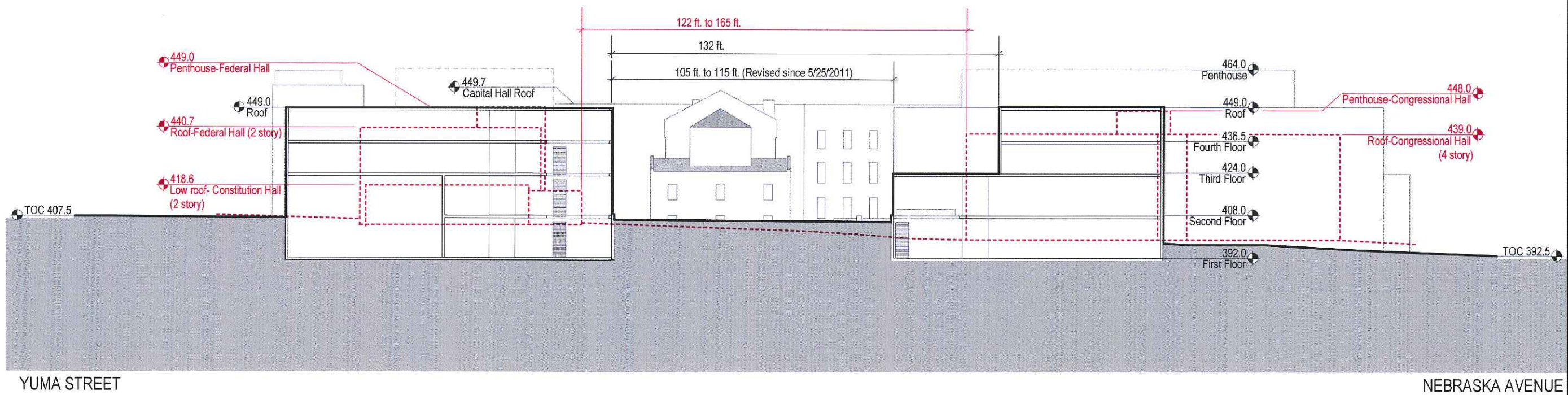
1 TRANSVERSE SECTION



American University
4400 Massachusetts Avenue, NW
Washington, DC 20016-6200

AMERICAN UNIVERSITY
Tenley Campus- Proposed
Washington College of Law

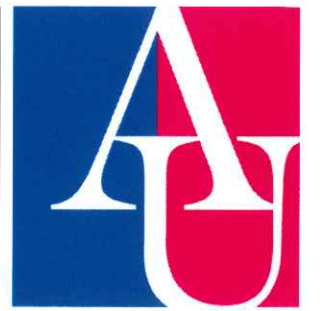
SMITHGROUP
architecture engineering interiors planning
SMITHGROUP, INC.
1850 K STREET NW
SUITE 250
WASHINGTON, DC 20006
T 202.842.2100
F 202.974.4500
www.smithgroup.com



TRANSVERSE SECTION

DRAWING TITLE
June 23, 2011
DATE
0 10' 20' 40'
SCALE
PROJECT NUMBER
DRAWING NUMBER

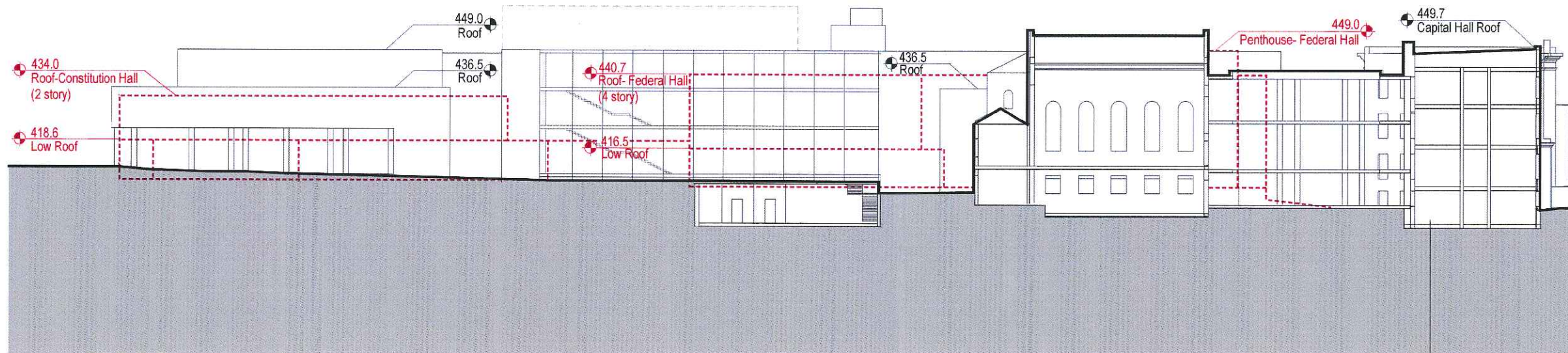
2 LONGITUDINAL SITE SECTION- NORTH



American University
4400 Massachusetts Avenue, NW
Washington, DC 20016-6200

AMERICAN UNIVERSITY
Tenley Campus- Proposed
Washington College of Law

SMITHGROUP
architecture engineering interiors planning
SMITHGROUP, INC.
1850 K STREET NW
SUITE 250
WASHINGTON, DC 20006
T 202.842.2100
F 202.974.4500
www.smithgroup.com



CAPITAL HALL



PROJECT NORTH

LONGITUDINAL SITE SECTION NORTH

DRAWING TITLE

June 23, 2011

DATE

0 10' 20' 40'

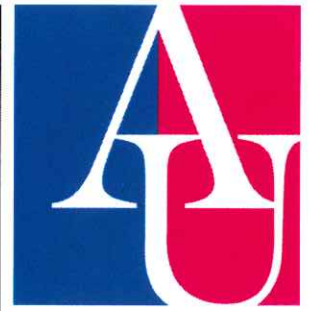
SCALE

PROJECT NUMBER

DRAWING NUMBER

—●— EXISTING
—●— PROPOSED

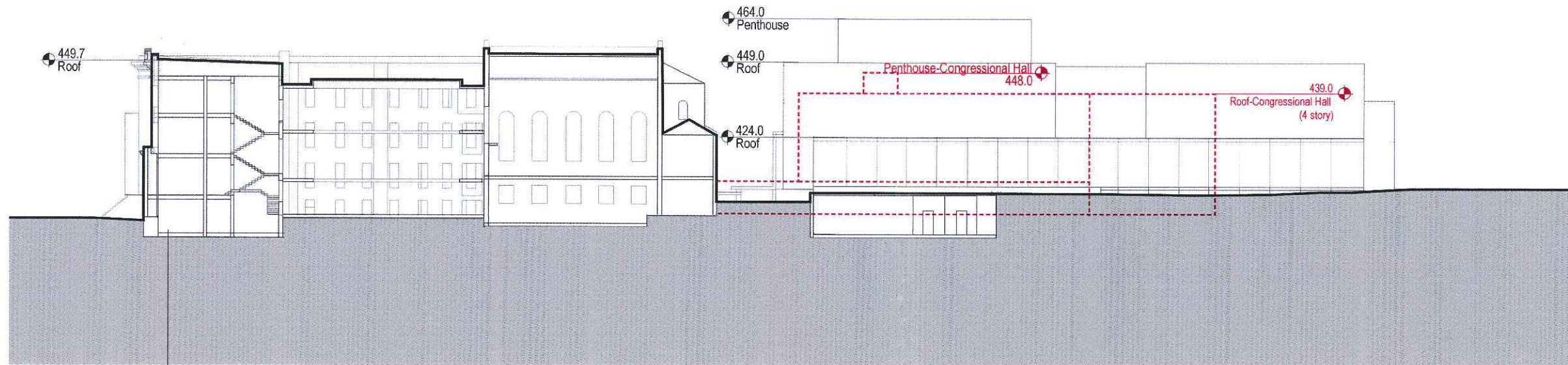
3 LONGITUDINAL SITE SECTION- SOUTH



American University
4400 Massachusetts Avenue, NW
Washington, DC 20016-6200

AMERICAN UNIVERSITY
Tenley Campus- Proposed
Washington College of Law

SMITHGROUP
architecture engineering interiors planning
SMITHGROUP, INC.
1850 K STREET NW
SUITE 250
WASHINGTON, DC 20006
T 202.842.2100
F 202.974.4500
www.smithgroup.com



CAPITAL HALL

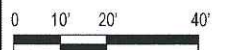


**LONGITUDINAL
SITE SECTION
SOUTH**

DRAWING TITLE

June 23, 2011

DATE



SCALE

PROJECT NUMBER

DRAWING NUMBER

- EXISTING
- PROPOSED