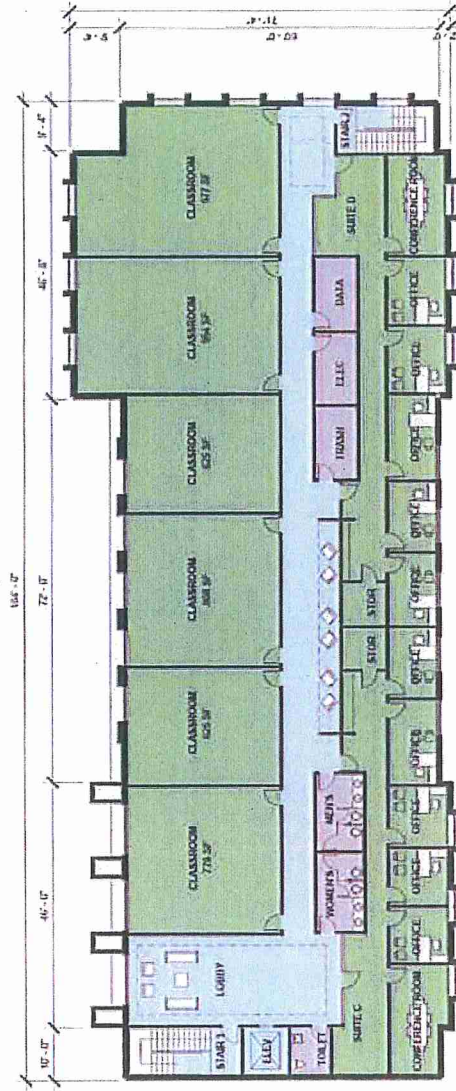




AMERICAN UNIVERSITY 2011 Campus Plan

East Campus Building 4 Second Floor Plan



THE APPLICANT REQUESTS THE FLEXIBILITY TO VARY THE LOCATION AND DESIGN OF ALL INTERIOR COMPONENTS, INCLUDING PARTITIONS, STRUCTURAL SLABS, DOORS, HALLWAYS, COLUMNS, STAIRWAYS, MECHANICAL ROOMS, ELEVATORS AND TOILET ROOMS, PROVIDED THAT THE VARIATIONS DO NOT CHANGE THE EXTERIOR CONFIGURATION OF THE STRUCTURE.

SECOND FLOOR PLAN

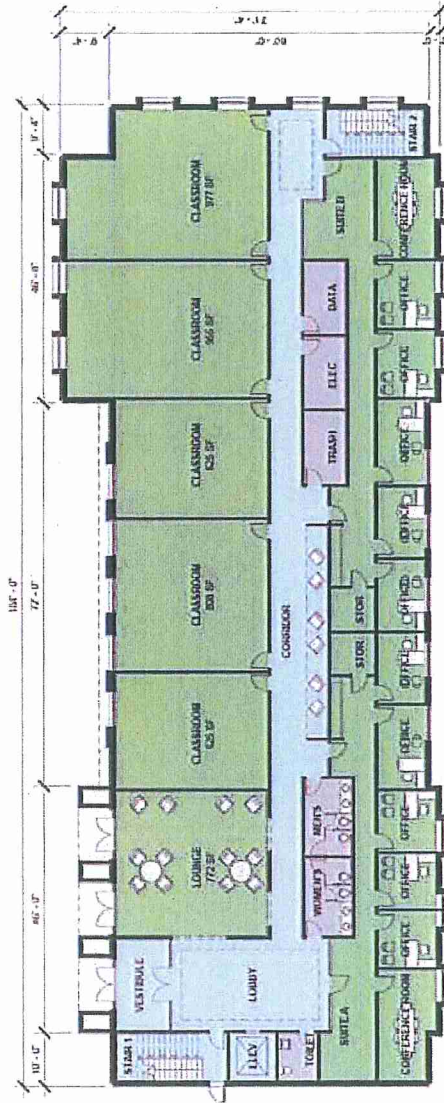
- ADMINISTRATIVE / ACADEMIC
- LOBBY/ CIRCULATION
- SUPPORT





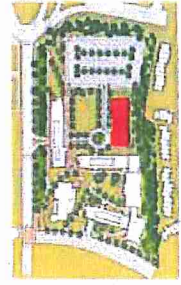
AMERICAN UNIVERSITY 2011 Campus Plan

East Campus Building 4 First Floor Plan



FIRST FLOOR PLAN

- ADMINISTRATIVE / ACADEMIC
- LOBBY/CIRCULATION
- SUPPORT

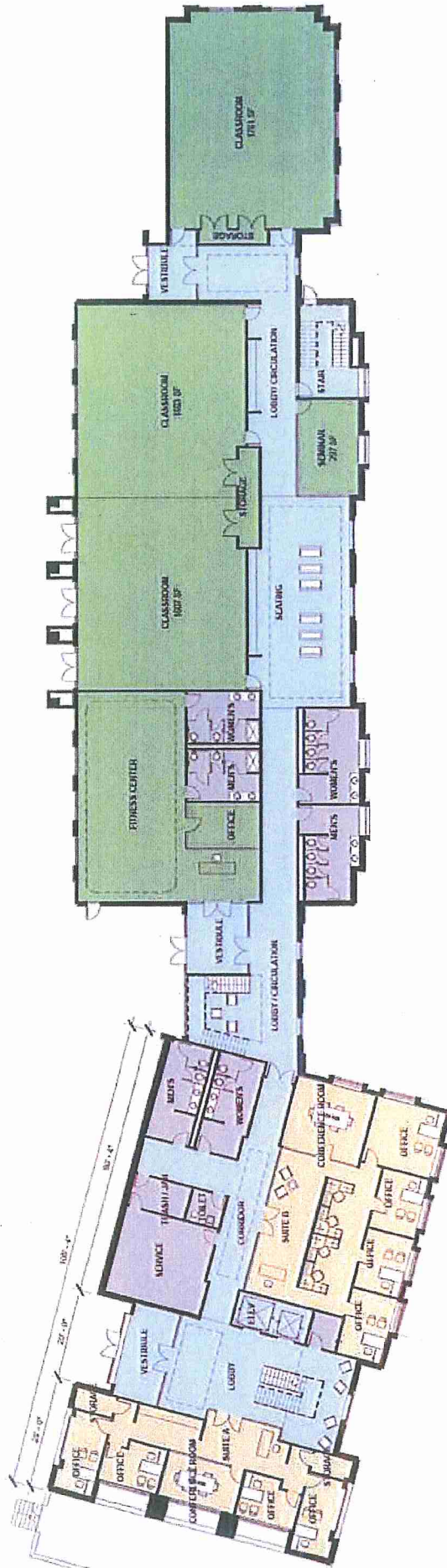


THE APPLICANT REQUESTS THE FLEXIBILITY TO VARY THE LOCATION AND DESIGN OF ALL INTERIOR COMPONENTS, INCLUDING PARTITIONS, STRUCTURAL SLABS, DOORS, HALLWAYS, COLUMNS, STAIRWAYS, MECHANICAL ROOMS, ELEVATORS AND TOILET ROOMS, PROVIDED THAT THE VARIATIONS DO NOT CHANGE THE EXTERIOR CONFIGURATION OF THE STRUCTURE.



AMERICAN UNIVERSITY 2011 Campus Plan

East Campus Building 6 First Floor Plan



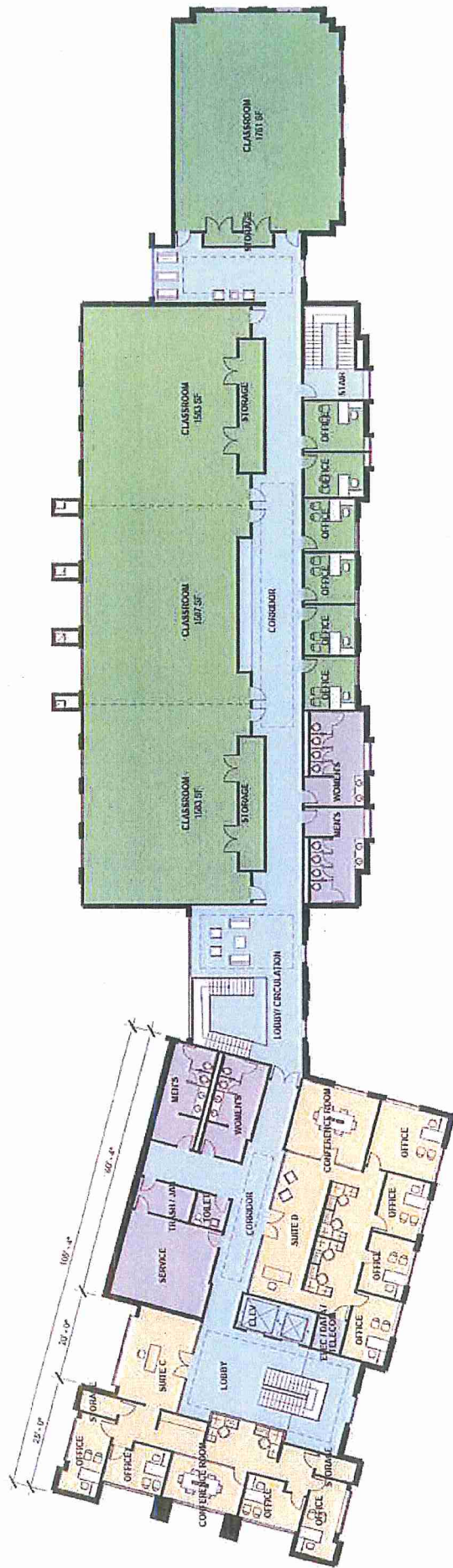
- FIRST FLOOR PLAN
- ADMINISTRATIVE / ACADEMIC
 - LOBBY / CIRCULATION
 - SUPPORT

THE APPLICANT REQUESTS THE FLEXIBILITY TO VARY THE LOCATION AND DESIGN OF ALL INTERIOR COMPONENTS, INCLUDING PARTITIONS, STRUCTURAL SLABS, DOORS, HALLWAYS, COLUMNS, STAIRWAYS, MECHANICAL ROOMS, ELEVATORS AND TOILET ROOMS, PROVIDED THAT THE VARIATIONS DO NOT CHANGE THE EXTERIOR CONFIGURATION OF THE STRUCTURE



AMERICAN UNIVERSITY 2011 Campus Plan

East Campus Building 6 Second Floor Plan



THE APPLICANT REQUESTS THE FLEXIBILITY TO VARY THE LOCATION AND DESIGN OF ALL INTERIOR COMPONENTS, INCLUDING PARTITIONS, STRUCTURAL SLABS, DOORS, HALLWAYS, COLUMNS, STAIRWAYS, MECHANICAL ROOMS, ELEVATORS AND TOILET ROOMS, PROVIDED THAT THE VARIATIONS DO NOT CHANGE THE EXTERIOR CONFIGURATION OF THE STRUCTURE.

SECOND FLOOR PLAN

- ADMINISTRATIVE
- ADMINISTRATIVE / ACADEMIC
- LOBBY/ CIRCULATION
- SUPPORT



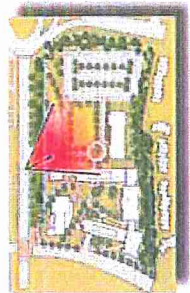


AMERICAN UNIVERSITY 2011 Campus Plan

East Campus Typical Building Detail – Building No. 1



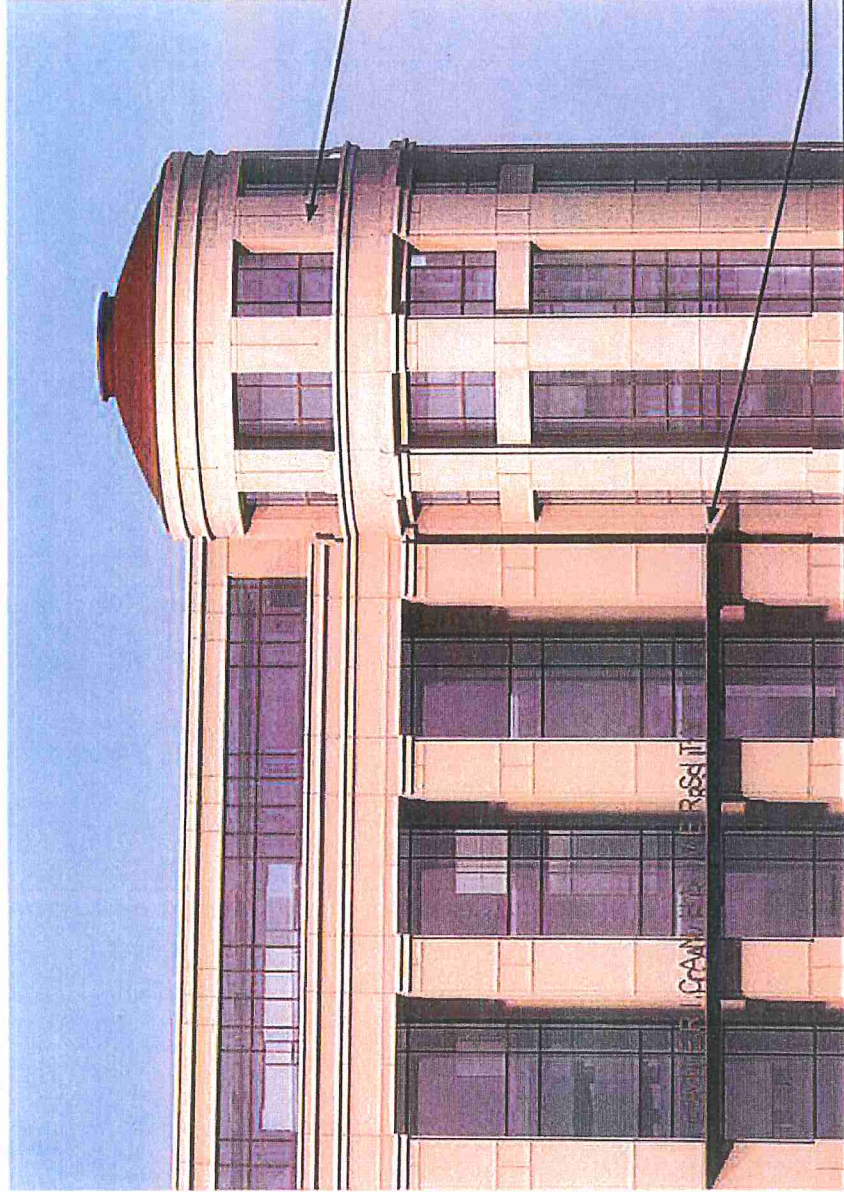
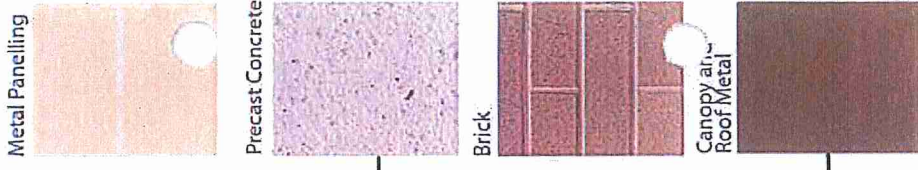
The university is requesting the flexibility to vary the final selection of the exterior materials within the color ranges and material types proposed, based on the availability at the time of construction. The university is requesting the flexibility to make refinements to exterior details and dimensions, including belt courses, sills, bases, cornices, railings, trim, and façade patterns and articulations





AMERICAN UNIVERSITY 2011 Campus Plan

East Campus Typical Building Detail – Building No. 5



The university is requesting the flexibility to vary the final selection of the exterior materials within the color ranges and material types proposed, based on the availability at the time of construction. The university is requesting the flexibility to make refinements to exterior details and dimensions, including belt courses, sills, bases, cornices, railings, trim, and façade patterns and articulations





AMERICAN UNIVERSITY 2011 Campus Plan

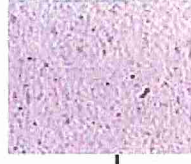
East Campus Typical Building Detail – Building No. 6



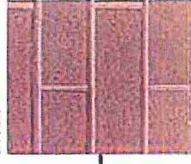
Metal Panelling



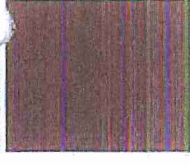
Precast Concrete



Brick



Canopy and Roof Metal

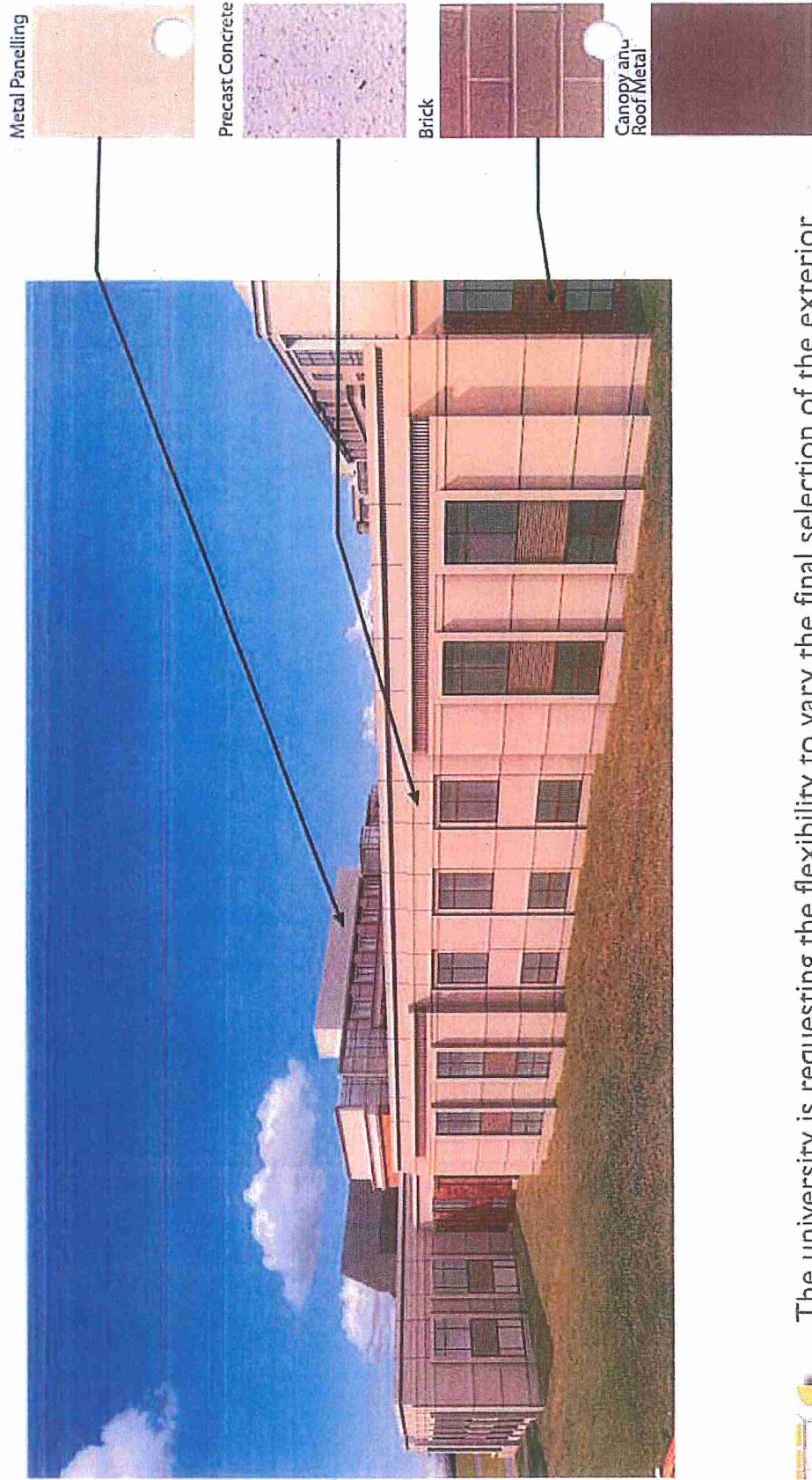


The university is requesting the flexibility to vary the final selection of the exterior materials within the color ranges and material types proposed, based on the availability at the time of construction. The university is requesting the flexibility to make refinements to exterior details and dimensions, including belt courses, sills, bases, cornices, railings, trim, and façade patterns and articulations

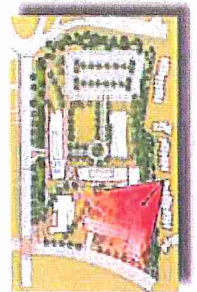


AMERICAN UNIVERSITY 2011 Campus Plan

East Campus Typical Building Detail – Building No. 6



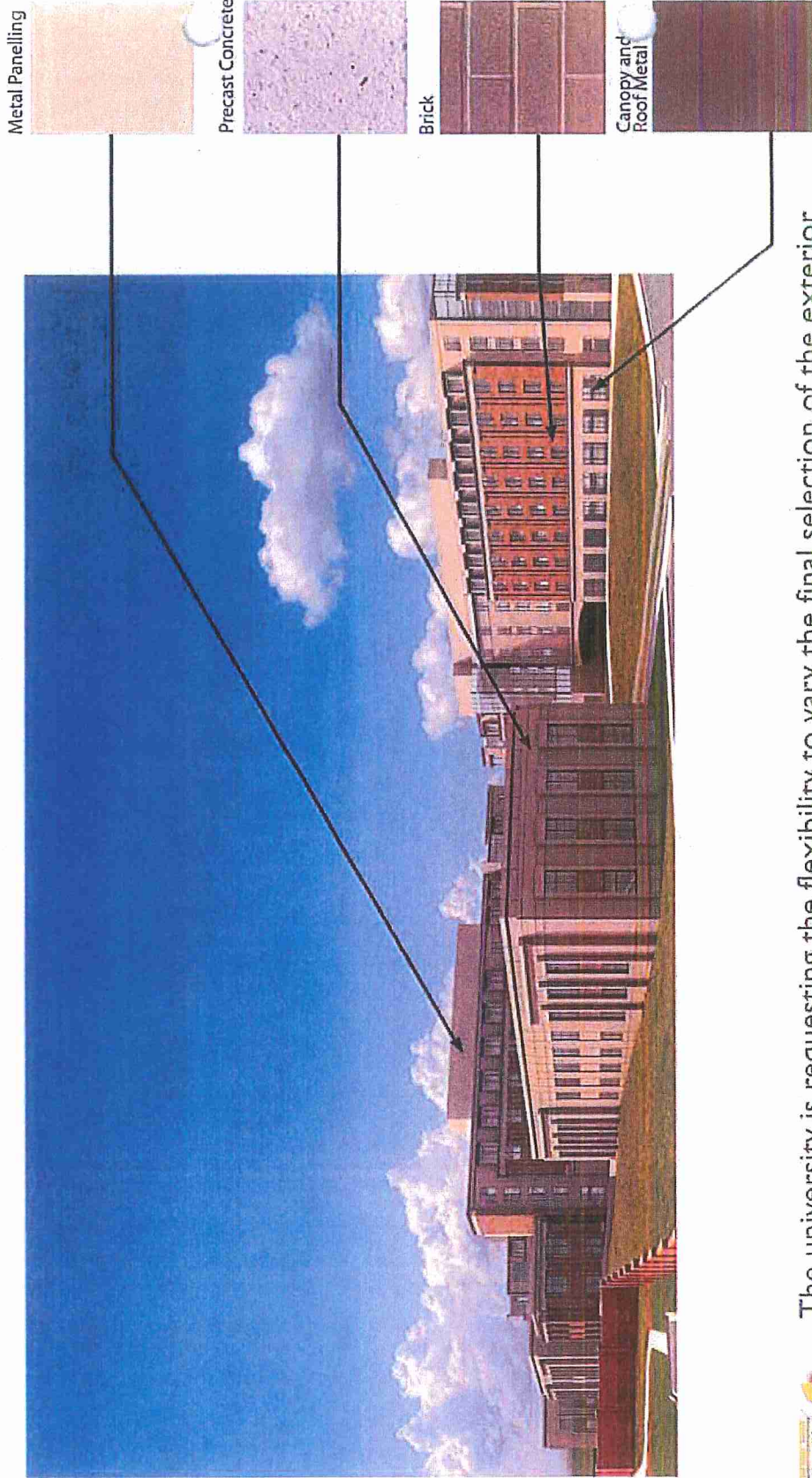
The university is requesting the flexibility to vary the final selection of the exterior materials within the color ranges and material types proposed, based on the availability at the time of construction. The university is requesting the flexibility to make refinements to exterior details and dimensions, including belt courses, sills, bases, cornices, railings, trim, and façade patterns and articulations





AMERICAN UNIVERSITY 2011 Campus Plan

East Campus Typical Building Detail – Building No. 4



The university is requesting the flexibility to vary the final selection of the exterior materials within the color ranges and material types proposed, based on the availability at the time of construction. The university is requesting the flexibility to make refinements to exterior details and dimensions, including belt courses, sills, bases, cornices, railings, trim, and façade patterns and articulations

